

# State of Wyoming Corner Record

(In compliance with the CORNER PERPETUATION AND FILING ACT, Wyoming Statutes, 1997 Section 33-29-140 et. seq., and the Rules and Regulations of the Board of Professional Engineers and Professional Land Surveyors)

Reverse side of this form may be used if more space is needed.

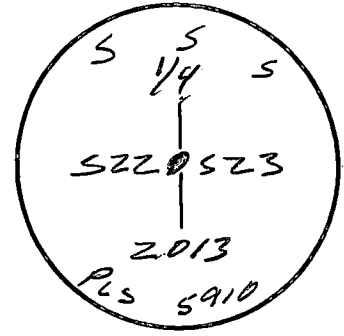
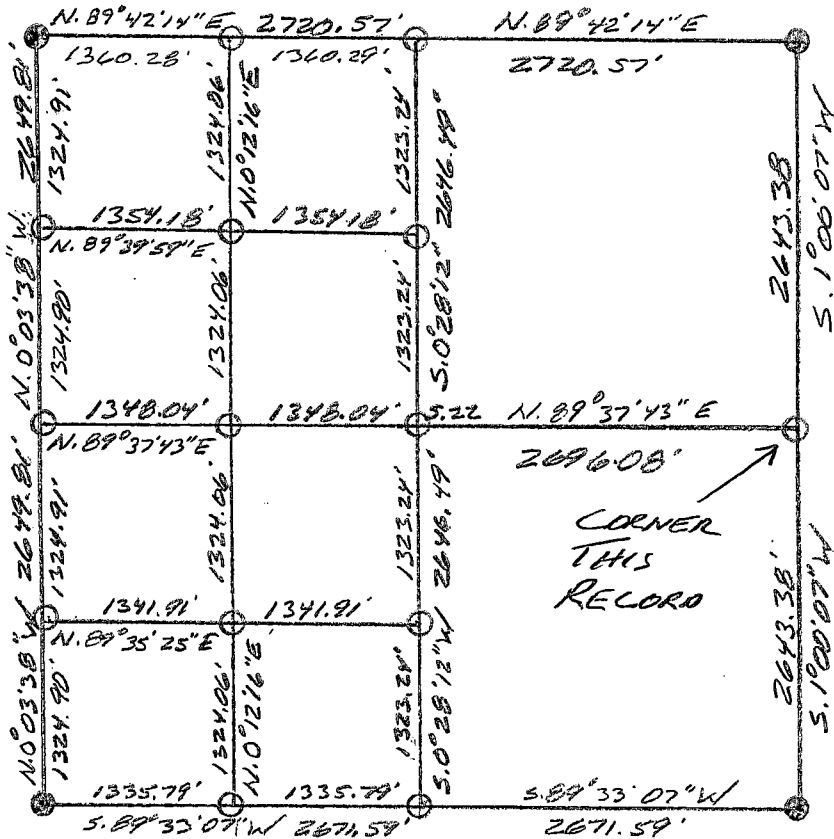
Record of original survey and citation of source of historical information (if corner is lost or obliterated). Description of corner monumentation evidence found and/or monument and accessories established to perpetuate the location of this corner. Sketch of relative location of monument, accessories, and reference points with course and distance to adjacent corner(s) (if determined in this survey). Method and rationale for reestablishment of lost or obliterated corner.

**RECORD:** SET A LIMESTONE 14X11X5, 10 INCHES DEEP MARKED '1/4 ON WEST SIDE FOR '1/4 SECTION CORNER.

**MONUMENT FOUND:** FOUND NOTHING.

**MONUMENT SET:** SET A 5/8" X 24" REBAR WITH A 2 1/2" ALUMINUM CAP SET FLUSH WITH THE GROUND WITH CAP STAMPED AS SHOWN.

**REFERENCES:** NO REFERENCES WERE SET.



Date of Field Work: 11-13-12

Office Reference: 13348

**Monument Inscription**

### Cross Index Plat

	1	2	3	4	5	6	7	8	9	10	11	12	13	14	15	16	17	18	19	20	21	22	23	24	25	
A	+	+	+	+	+	+	+	+	+	+	+	+	+	+	+	+	+	+	+	+	+	+	+	+	+	A
B	+	+	+	+	+	+	+	+	+	+	+	+	+	+	+	+	+	+	+	+	+	+	+	+	+	B
C	+	6	+	5	+	4	+	3	+	2	+	1	+	C												C
D	+	+	+	+	+	+	+	+	+	+	+	+	+	D												D
E	+	+	+	+	+	+	+	+	+	+	+	+	+	E												E
F	+	+	+	+	+	+	+	+	+	+	+	+	+	F												F
G	+	7	+	8	+	9	+	10	+	11	+	12	+	G												G
H	+	+	+	+	+	+	+	+	+	+	+	+	+	H												H
J	+	+	+	+	+	+	+	+	+	+	+	+	+	J												J
K	+	+	+	+	+	+	+	+	+	+	+	+	+	K												K
L	+	18	+	17	+	16	+	15	+	14	+	13	+	L												L
M	+	+	+	+	+	+	+	+	+	+	+	+	+	M												M
N	+	+	+	+	+	+	+	+	+	+	+	+	+	N												N
O	+	+	+	+	+	+	+	+	+	+	+	+	+	O												O
P	+	19	+	20	+	21	+	22	+	23	+	24	+	P												P
Q	+	+	+	+	+	+	+	+	+	+	+	+	+	Q												Q
R	+	+	+	+	+	+	+	+	+	+	+	+	+	R												R
S	+	+	+	+	+	+	+	+	+	+	+	+	+	S												S
T	+	30	+	29	+	28	+	27	+	26	+	25	+	T												T
U	+	+	+	+	+	+	+	+	+	+	+	+	+	U												U
V	+	+	+	+	+	+	+	+	+	+	+	+	+	V												V
W	+	+	+	+	+	+	+	+	+	+	+	+	+	W												W
X	+	31	+	32	+	33	+	34	+	35	+	36	+	X												X
Y	+	+	+	+	+	+	+	+	+	+	+	+	+	Y												Y
Z	+	+	+	+	+	+	+	+	+	+	+	+	+	Z												Z
	1	2	3	4	5	6	7	8	9	10	11	12	13	14	15	16	17	18	19	20	21	22	23	24	25	

Firm/Agency, Address

**STEIL SURVEYING SERVICES LLC**  
**1102 WEST 19TH STREET**  
**CHEYENNE WY 82001**

Telephone Number: **(307) 634-7273**

This corner record was prepared by me or under my direction and supervision.



Corner Name EAST QUARTER Section 22, T 18 N, R 60 W, 6th P.M. County: LARAMIE Wyoming

Cross-Index No.: P-17

SBRPEPLS/PLSW: March 1994; PLSW January 1998



RECP #: 754998

RECORDED 6/12/2019 AT 10:10 AM BK# 2624 PG# 1937  
 Debra K. Lee, CLERK OF LARAMIE COUNTY, WY PAGE 1 OF 1